



Seat Install Guide

Step 1: Remove old seat from fluid end.

Step 2: Clean debris/sand from sealing surfaces.

Step 3: Clean debris/sand from hardened insert load face.

!! This is important, any debris/sand left on the load face can cause premature failures !!

Step 4: Inspect sealing surfaces/load face prior to loading new seat.

Step 5: Carefully load new seat into bore and press in by hand as far as it will allow.

Step 6: **Use the seat install tool provided to properly bottom out the new seat.**

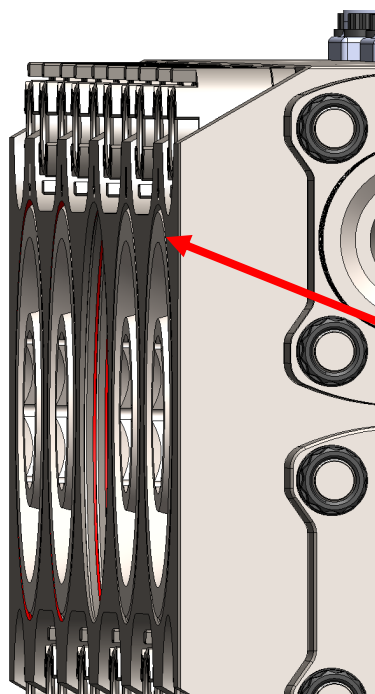
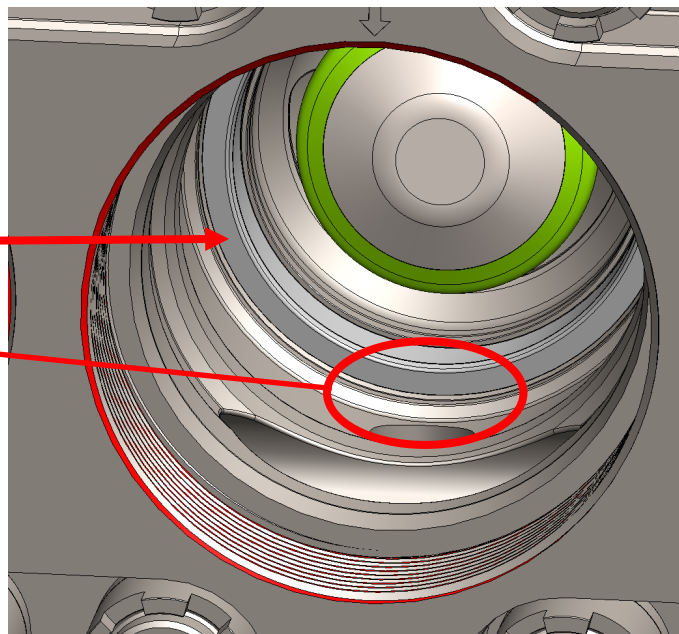
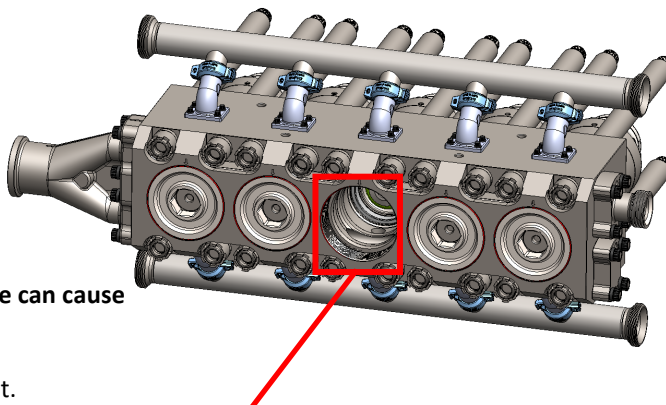
!! DO NOT HAMMER SEAT !!

See next page for tool use instructions.

Step 7: Verify seat is bottomed out before proceeding to installation of discharge plug.

!! Clean/inspect the entire load face !!

!! The area at the bottom of the fluid end bore is prone to sand accumulation !!



!! If all components bottomed out properly, the cover nut will sit flush with the face of the fluid end !!



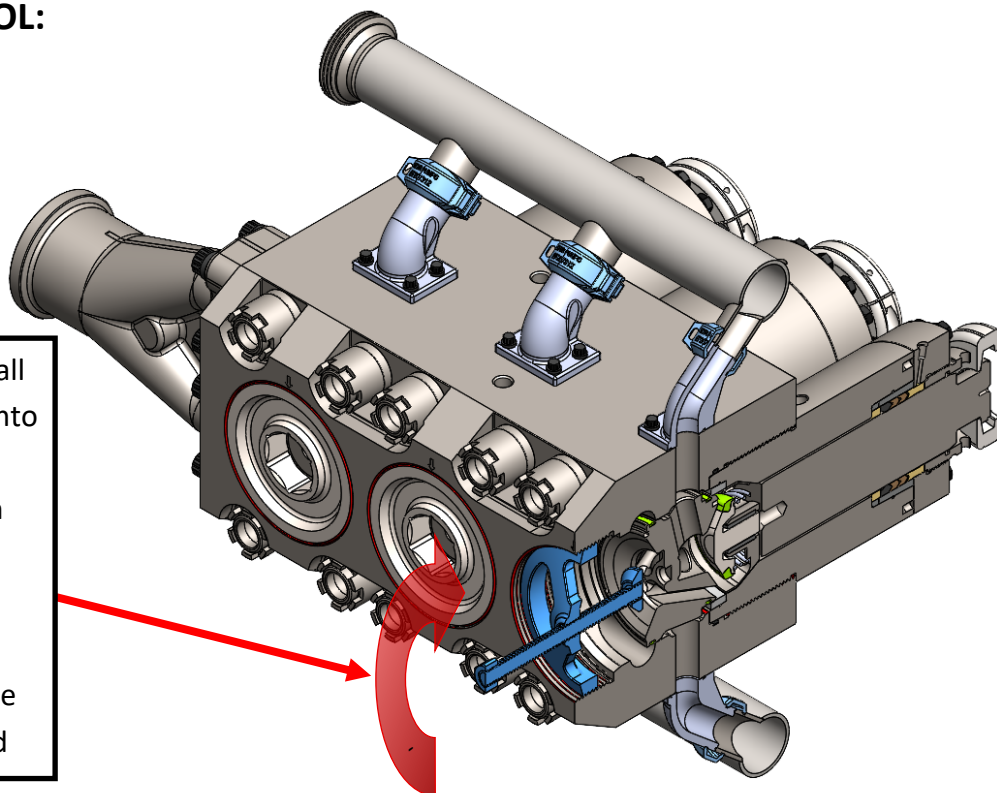
Seat Install Guide

EF5 VORTEX - PUSHERTOOL:

DISCHARGE PLUG/SEAT

PUSHER TOOL

The pusher tool is utilized to install the discharge plug and the seat into the fluid end. To use, thread the tool into the fluid end and use an impact wrench to spin the all-thread bar clockwise, pushing against the seat/discharge plug. This will ensure that the discharge plug and seat are properly seated.



Before

After

